

Applied Artificial Intelligence

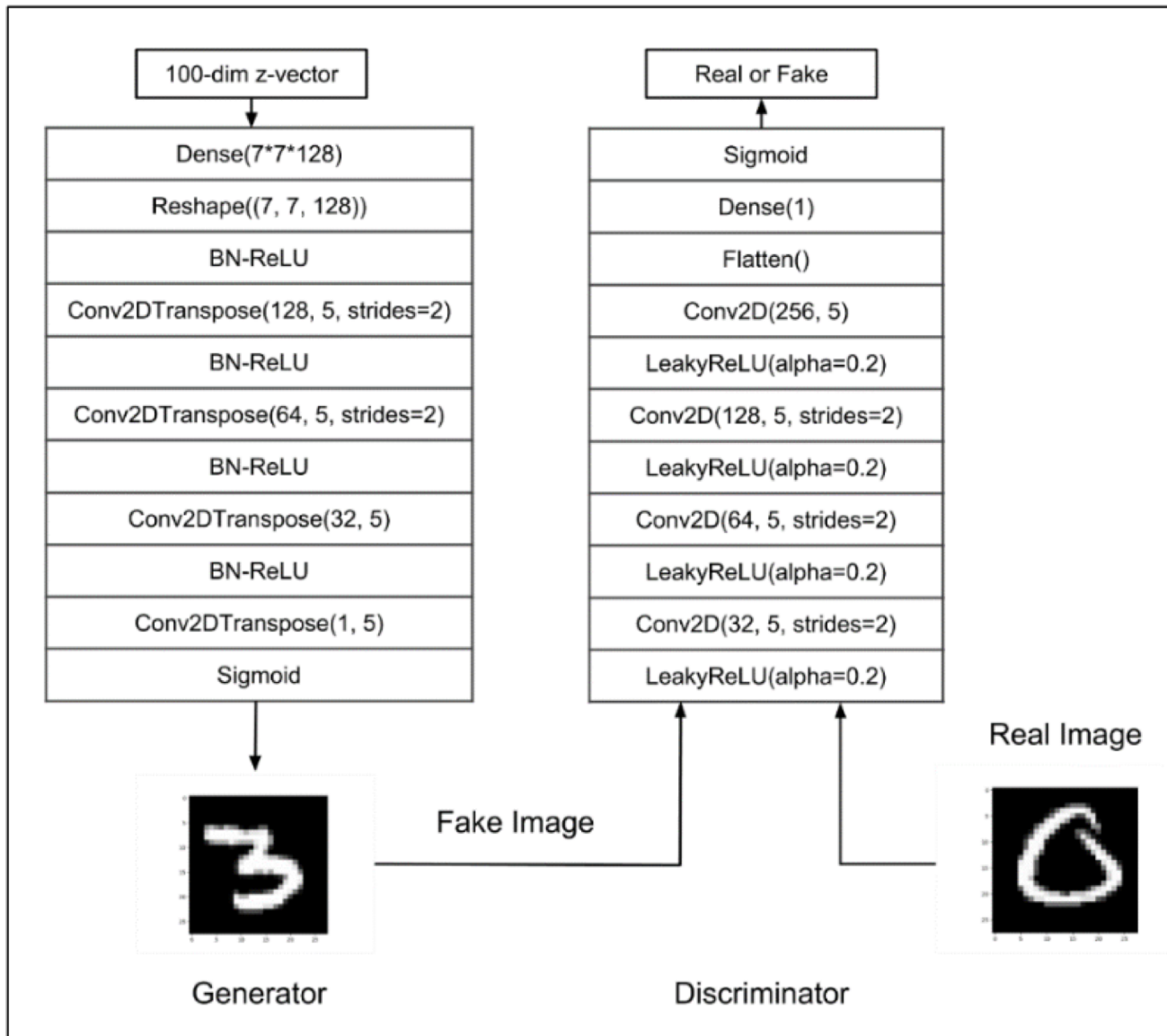
Session 27: GANs III
Reinforcement Learning I
Fall 2018

NC State University

Lecturer: Dr. Behnam Kia

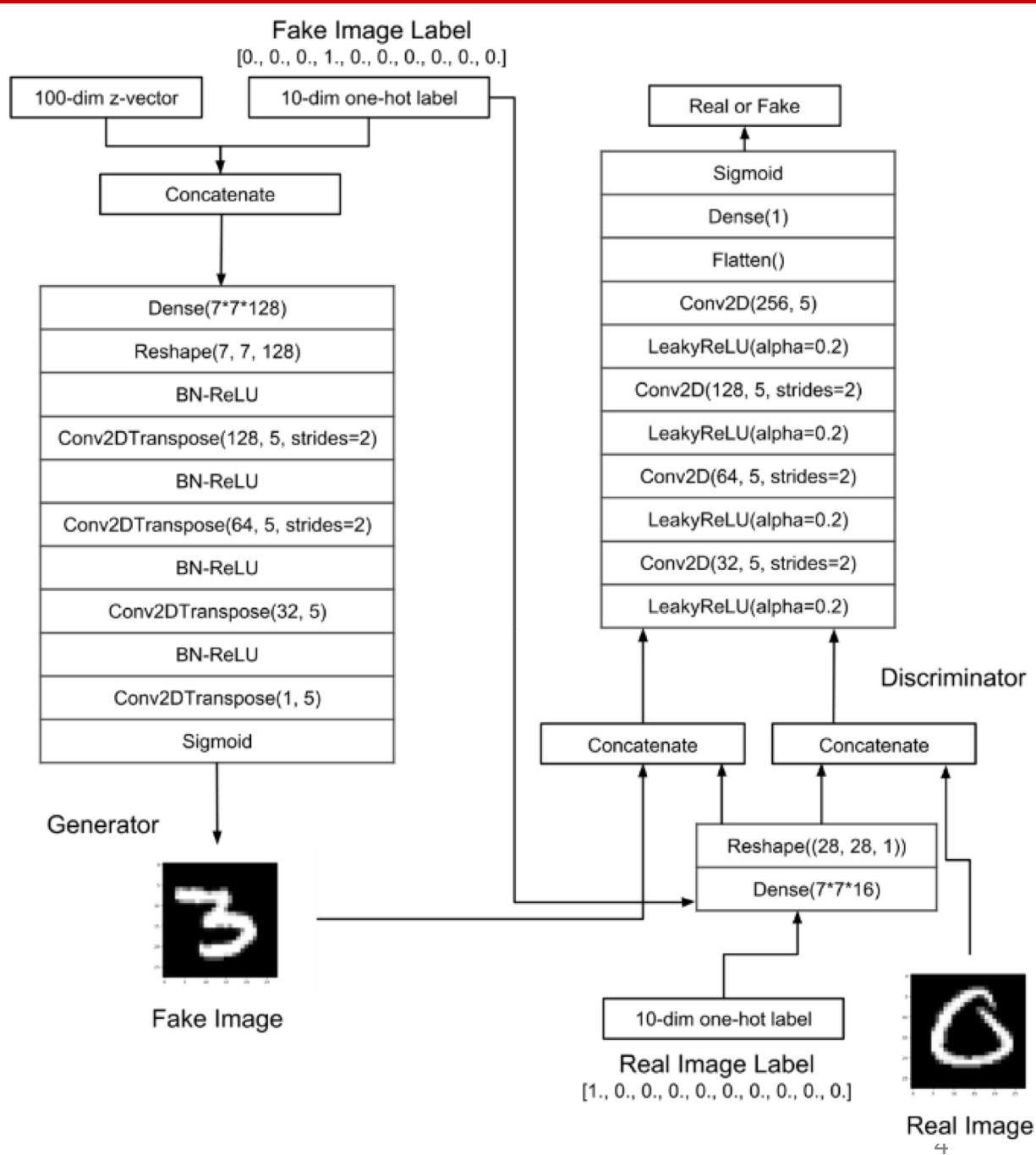
Course Website: <https://appliedai.wordpress.ncsu.edu/>

Deep Convolutional GANs



<https://www.youtube.com/watch?v=G06dEcZ-QTg&feature=youtu.be>

Conditional GAN



- <https://github.com/NVIDIA/vid2vid>

Reinforcement Learning

Supervised Learning

Supervised Learning

- Automatically build a function that maps inputs to the outputs, given a set of example pairs.

Unsupervised Learning

- No labels assigned to the data. The goal is to learn the hidden structure of the data, e.g. clustering, etc.

GAN is Supervised or Unsupervised?

- Although the discriminator is trained using a supervised method, but the generator itself is unsupervised.
- GAN tries to learn how the data looks like and estimates its pdf, and then generators synthetic data.

GAN is Supervised or Unsupervised?

Reinforcement Learning

- Reinforcement Learning (RL): Learning Optimal Behavior in Complex Environment

Unsupervised Learning

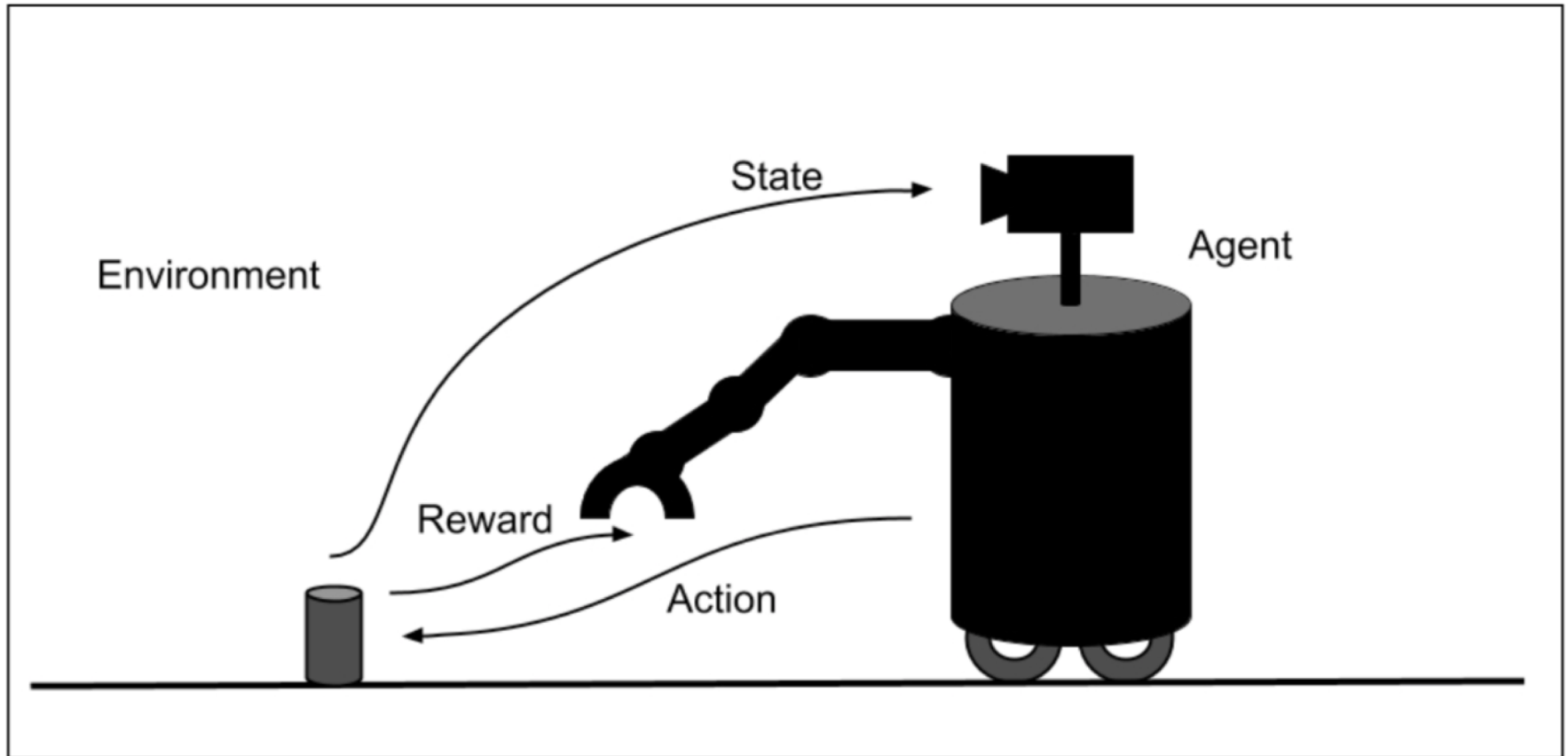
Reinforcement Learning

Supervised Learning

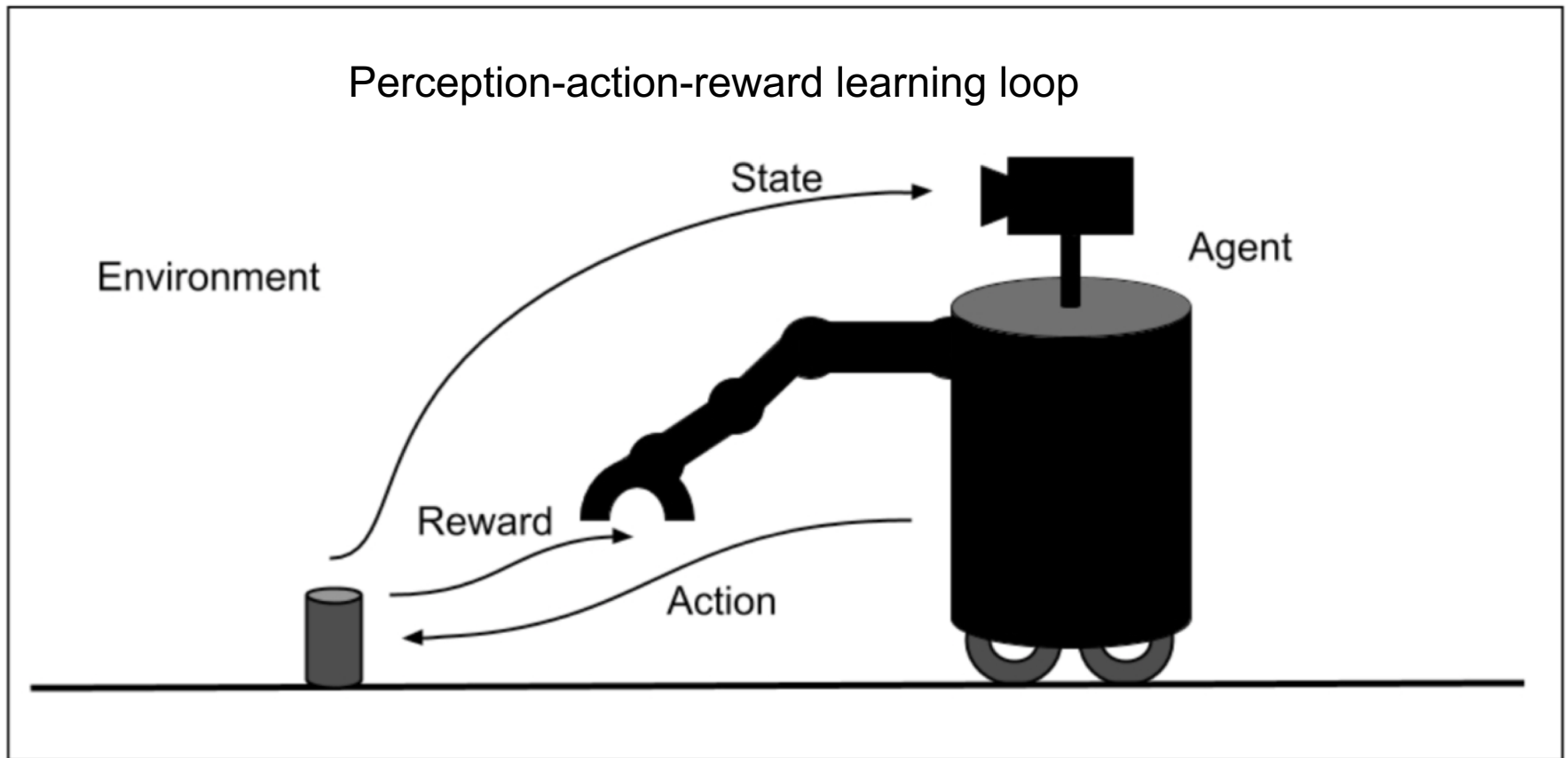
Availability of labels and performance feedback



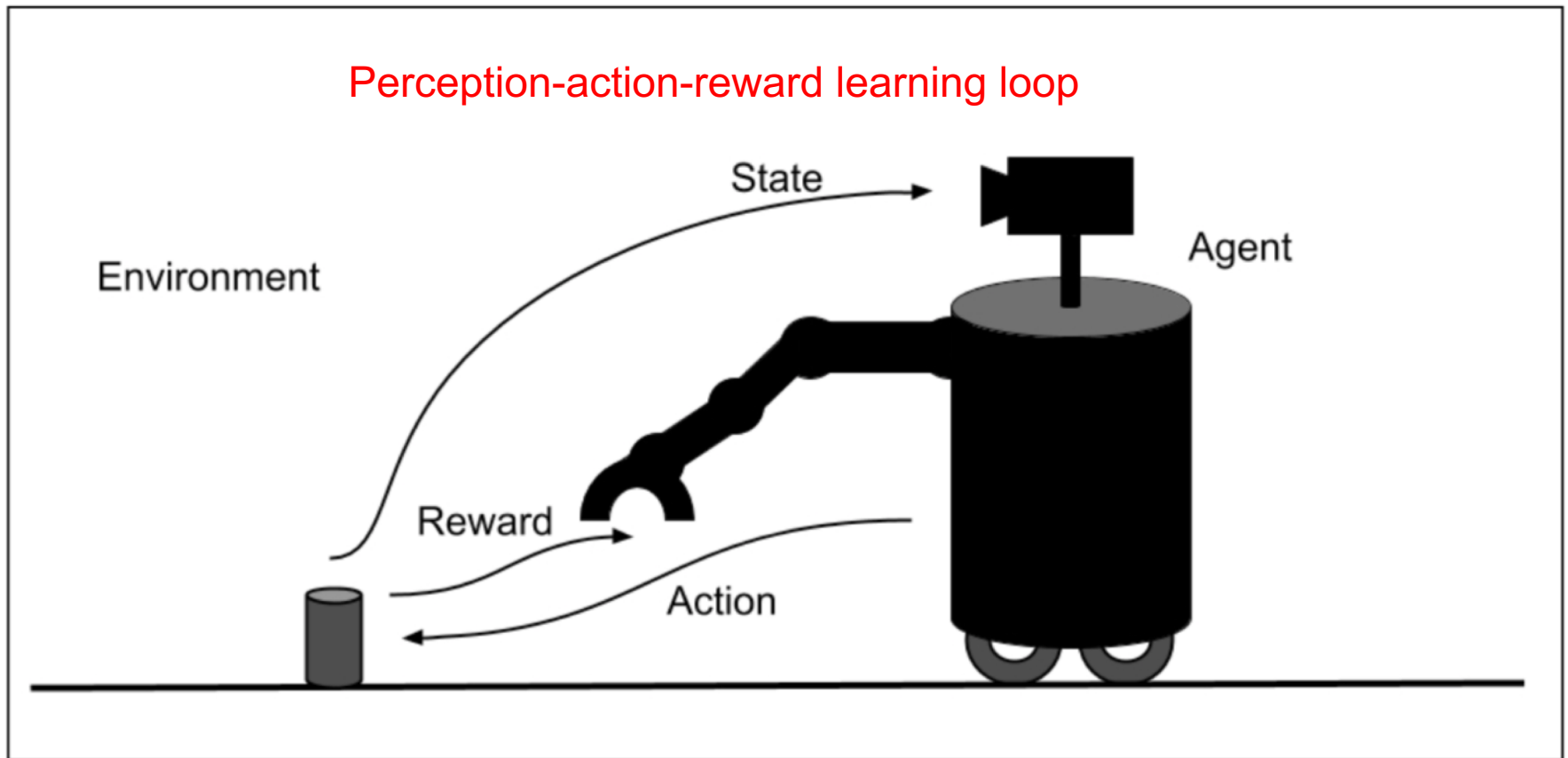
Reinforcement Learning



Reinforcement Learning



Reinforcement Learning



Reinforcement Learning

Perception-action-reward learning loop

Goal: To learn a policy to take actions that maximizes rewards

